

Fixing Kit **QUICK** installation Guide

Step 1



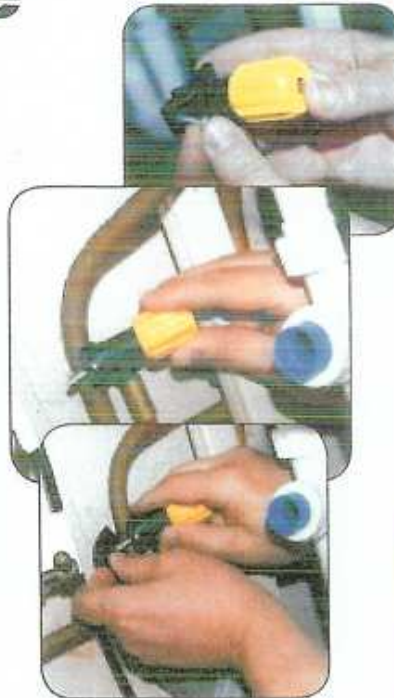
Gather all the components and The Water Ionizer around where you want to install it. Make sure there is an electric plug socket nearby. Then, choose where you will install the faucet and mark the area with your pencil. Look at the material you will drill into, if you're drilling into metal you need a drill bit that cuts through metal and the same if you're drilling through wood. NOTE: Be aware of the length of the faucet underneath the worktop or sink, it hangs down by around 8cm - if you're installing the faucet on the worktop above your washing machine or kitchen appliance (as seen in the photos), make sure you'll be able to push your appliance back into the space once the faucet is in place.

Step 2



Now find the stop-cock for your main water, you need to locate it in case of an emergency. You'll see from the photo there're two pipes running up to your taps. You need to identify the cold water pipe, so run the hot tap so you can feel which pipe carries the hot water. Now mark the cold water pipe.

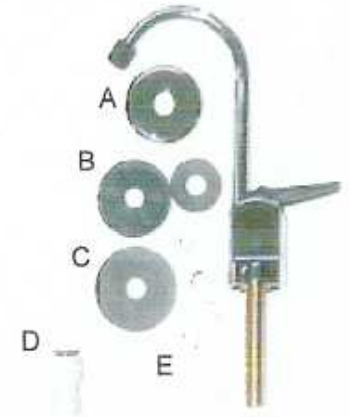
Step 3



Work out where you want the saddle valve on the cold water pipe and make sure the red pipe can reach the bottom of where the faucet where it will be attached to. Insert the screws into the holes shown in the first photo, and then place the valve in the place where the valve will go shown in the second photo. Now pick up the black attachment and finger screw it to the valve as shown in the third photo.



Saddle valve



Faucet, grey adaptor & attachments



Pencil



Crosshead screwdriver



13mm wood or metal drill bit



Chuck



Drill

Fixing Kit **QUICK** installation Guide

Step 4



Once the valve is attached onto the pipe, make sure that the red pipe will reach to the faucet. Now tighten as much as you can the valve onto the pipe as shown in the first photo, the best method is to tighten each side bit by bit.

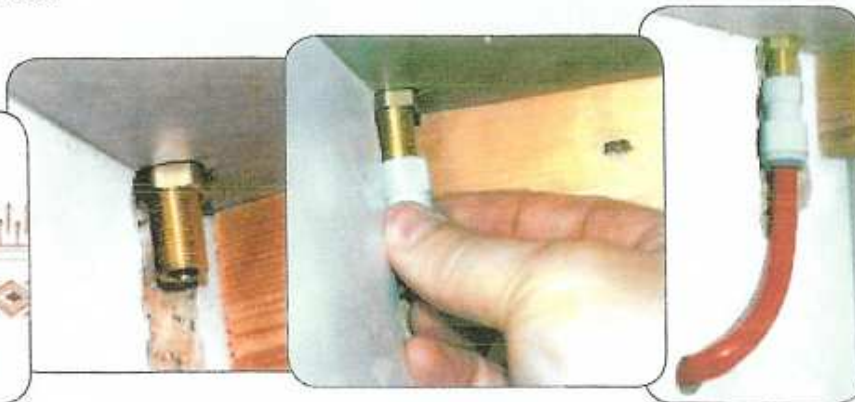
Step 5



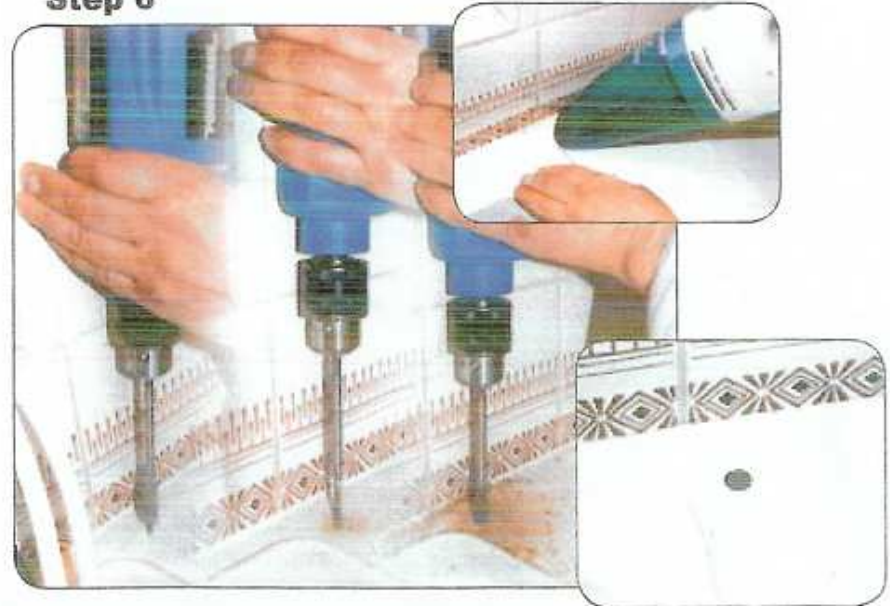
If you're confident that the valve is properly tightened onto the pipe, you can now take a deep breath and turn the valve. You should turn the valve clockwise if the pipe is positioned at six o'clock (as the photo) or anti-clockwise if the pipe is at twelve o'clock. If the valve is too stiff to turn place a cloth over the valve and turn - this will give you more grip. Continue to turn the valve until you cannot any longer, you now have cut into the pipe so do not disconnect.



Step 7



Step 6



Look back at where you marked to install the faucet and double check that you are going to drill in the right place. If you look at 'Step 7' you will see that even though we made provisions and followed our own instructions that we still made an error and had to adlib. Now if you're confident, drill into the surface, as shown in the photo making sure that you do not have the hammer function turned on your drill. You can see in the photo above, a nice clean hole should appear. Now make sure you Hoover up your mess!

Pick up the faucet and attachment C. If the black nib is still attached to the end of the faucet then please pull it off, so it looks like the first photo. Slot attachment C onto the thread end of the faucet and slide to the base of the faucet. Now put the thread end of the faucet into the hole through your surface making sure attachment C is flush with the faucet base (as in the first photo). Take the nut (attachment E) that fits the thread and finger tighten it until it is very tight, you may need to use a spanner but in most cases it is not needed. Find attachment D and screw it onto the thread from the faucet just as the photo and fully tighten it. Now take the red pipe from the valve and push it into attachment D as far as possible, it will lock into place creating a seal. Please note the modifications that were needed to be done in the photos as we got the measurements wrong - that is how not to install your fixing kit.

For Assistance, contact Brad Hamilton at 408-309-1815

www.AlkalizerH2O.com

Fixing Kit **QUICK** installation Guide

Step 8



Once you feel that everything attached to the faucet and the faucet itself is all on tightly, you can take the white tube (not the cream tube) leading from the machine and push it onto the end of the faucet neck. Now you can test the flow of water through the machine, please do not turn the machine on yet, just point the outlets into the sink and turn on the faucet as the photo shows. If the water is only trickling out, try turning the valve both clockwise and anticlockwise, this helps with the pressure.

Step 8



pH KIT

If you are happy with the flow (the ideal flow is shown in the photo) turn on the machine with the water running. You will see the LEDs flash up and down. The next thing you'll see will be the green LED flashing through the levels, this means the machine is analysing your water to find the best method of electrolysis. Once the green LED has settled on a level, test the water using the pH testing kit as shown in the photo. you will find it inside the machine's box. Fill the tiny cup up halfway with the water from the chrome hose, it should come out a bluish colour, if it does the machine is working. Please contact us if it is green. You now have a fully functioning product which will give you the best tasting water ever!